



# GEIGER

## ENERGY

**BUILT FOR DISCOVERY**

**BEEP: TSXV | BSENF: OTCQB**

# FORWARD LOOKING STATEMENTS



## **WE ARE IN THE MINERAL EXPLORATION AND DEVELOPMENT BUSINESS. IT IS INHERENTLY RISKY, AND ALL INVESTORS SHOULD BE KEENLY AWARE OF THIS**

This presentation contains forward-looking statements and forward-looking information (collectively referred to herein as “forward-looking statements”) within the meaning of applicable securities laws. All statements, other than statements of present or historical fact are forward-looking statements. Forward-looking statements are often, but not always, identifiable by use of words such as “may”, “will”, “could”, “should”, “can”, “continue”, “expect”, “anticipate”, “estimate”, “believe”, “intend”, “plan”, “grow”, “strategy” or “project” or the negative of these words or other variations on these words or comparable terminology or similar words suggesting future outcomes. In particular, this presentation contains forward looking statements relating to strategic plans along with other activities, events or developments that Geiger Energy Corp. (“**Geiger**”) believes, expects or anticipates will or may occur in the future (including, without limitation, statements regarding the estimation of mineral resources, exploration results, potential mineralization, potential mineral resources and mineral reserves). The forward-looking statements regarding Geiger are based on certain key expectations and assumptions of Geiger concerning production and prices, business prospects, strategies, mineral reserves and mineral resources, anticipated grades, recovery rates, regulatory developments, exchange rates, commodity prices, tax laws, the sufficiency of budgeted expenditures in carrying out planned activities, the availability and cost of labour and services and the ability to obtain financing on acceptable terms and the actual results of exploratory activity being equivalent to or better than estimated results, all of which are subject to change based on market conditions and potential timing delays. Although management of Geiger consider these assumptions to be reasonable based on information currently available to them, they are inherently subject to significant business, economic and competitive uncertainties, and contingencies and may prove to be incorrect.

By their very nature, forward-looking statements involve inherent risks and uncertainties (both general and specific) and risks that forward-looking statements will not be achieved. Undue reliance should not be placed on forward-looking statements, as a number of important factors could cause the actual results to differ materially from the beliefs, plans, objectives, expectations and anticipations, estimates and intentions expressed in the forward-looking statements, including among other things inability to meet current and future obligations; inability to implement Geiger business strategy effectively; general economic and market factors, including business competition, changes in government regulations; volatility in the market prices; failure to establish estimated mineral resources; the possibility that future exploration results will not be consistent with Geiger’s expectations; the actual results of exploration, development and operational activities; engineering, technical and processing problems; liabilities and risks, including engineering liabilities and risks; changes in project parameters as plans continue to be refined; access to capital markets; interest and currency exchange rates; technological developments; general political and social uncertainties; lack of insurance; delay or failure to receive regulatory approvals, including necessary permits and licenses; changes in legislation; timing and availability of external financing on acceptable terms; and lack of qualified, skilled labour or loss of key individuals. Readers are cautioned that the foregoing list is not exhaustive.

Any forward-looking statement speaks only as of the date on which it is made. Geiger disclaims any intention or obligation to update or revise any forward looking statements and future oriented financial information contained in this Presentation, whether as a result of new information, future events or otherwise, unless required pursuant to applicable law. Readers are cautioned that the forward looking statements and future oriented financial information contained in this Presentation should not be used for purposes other than for which it is disclosed herein. Readers are cautioned that reliance on such information may not be appropriate for other purposes.

All currency numbers are in \$CAD unless otherwise stated.

## **QP STATEMENT**

The technical information contained in this presentation has been reviewed and approved by Rebecca Hunter, P.Ge., President & CEO of Geiger Energy Corp., who is considered to be a Qualified Person as defined in “National Instrument 43-101, Standards of Disclosure for Mineral Projects.”

# UNIQUE LAND POSITION IN THE TWO BEST URANIUM DISTRICTS

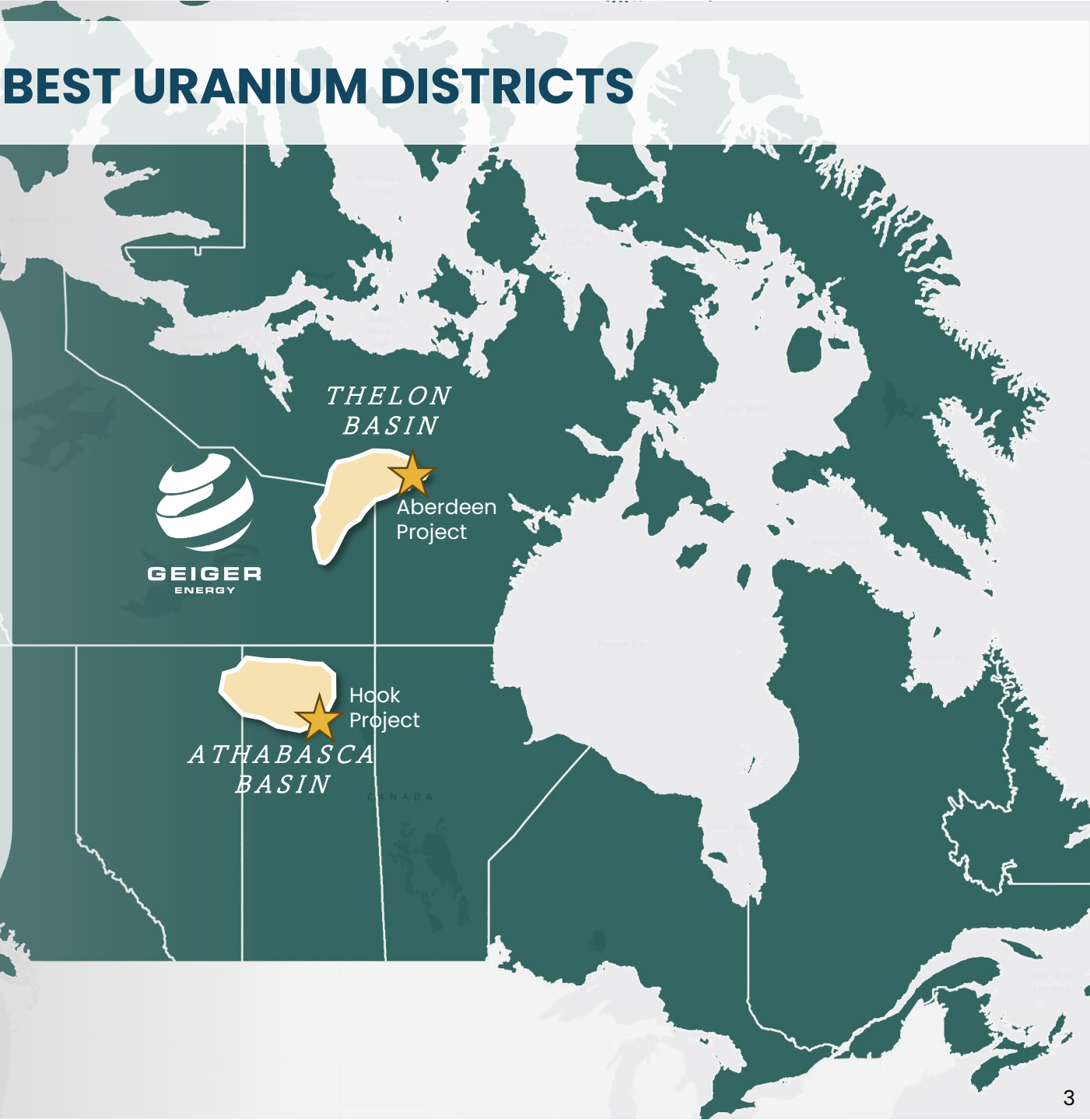
## A High-Impact Discovery Story:

### Hook Project – Athabasca Basin

World's highest grade uranium district.  
Proven discovery model.  
Best infrastructure and jurisdiction globally.

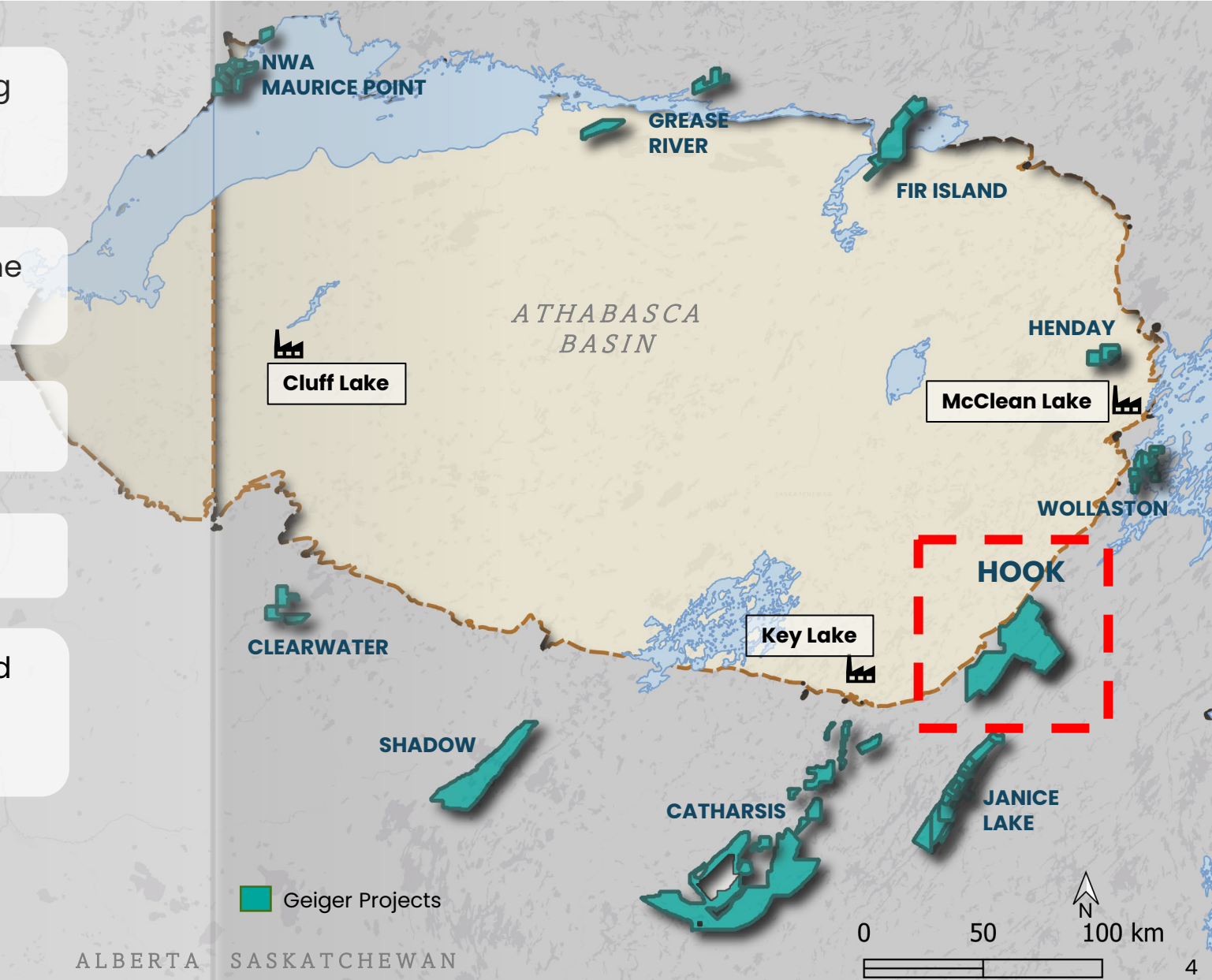
### Aberdeen Project – Thelon Basin

First discovery of Athabasca-like uranium.  
Last high-grade Tier One uranium frontier.  
Established uranium potential but vastly underexplored.



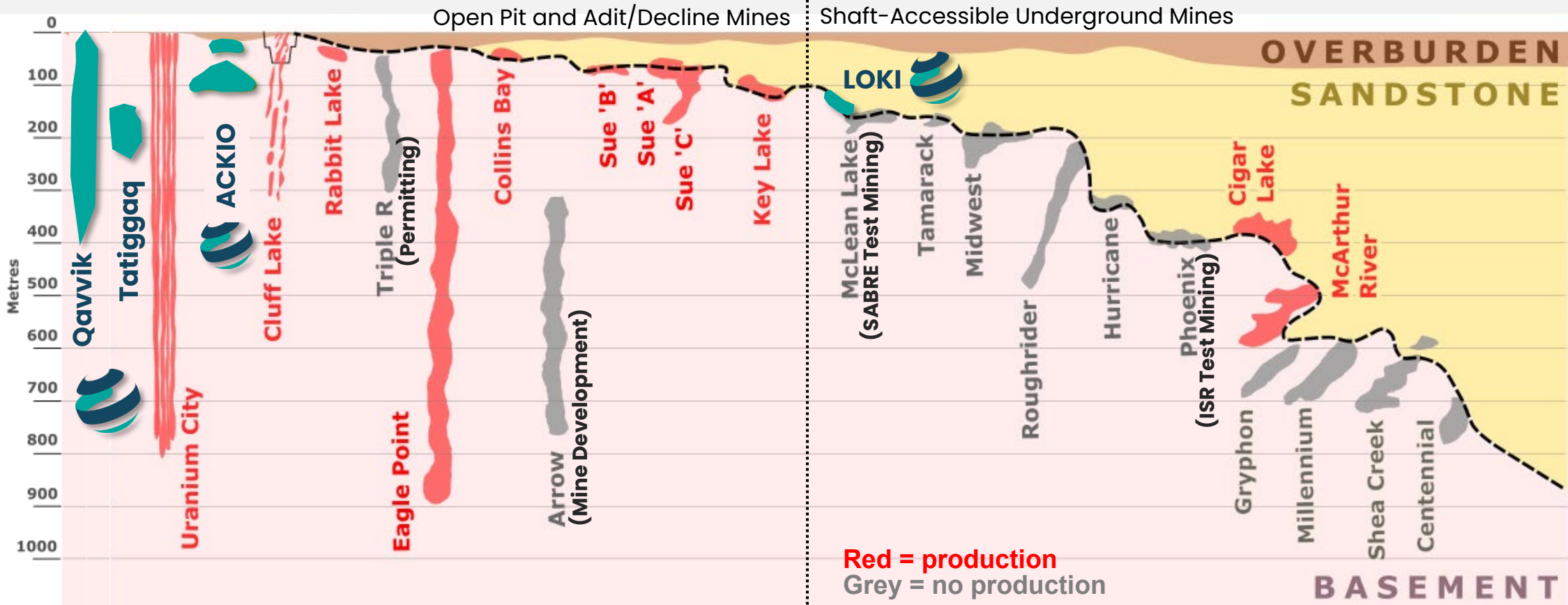
# ATHABASCA BASIN – DISCOVERY ADVANCEMENT AND OPTIONABILITY

- ▶ Geiger has 13 projects in the Athabasca spanning 350 km<sup>2</sup>. All claims in good standing for multiple years. Optionality play potential
- ▶ Significant discovery at Hook showing some of the best near surface intersections in the basin.
- ▶ Fertile system with project growth potential
- ▶ Tier-One jurisdiction and infrastructure
- ▶ Hook Project: Near term asset with expansion and additive potential.  
High grade, near surface, easily mineable.



# NEAR SURFACE URANIUM DEPOSITS ARE VIABLE MINES

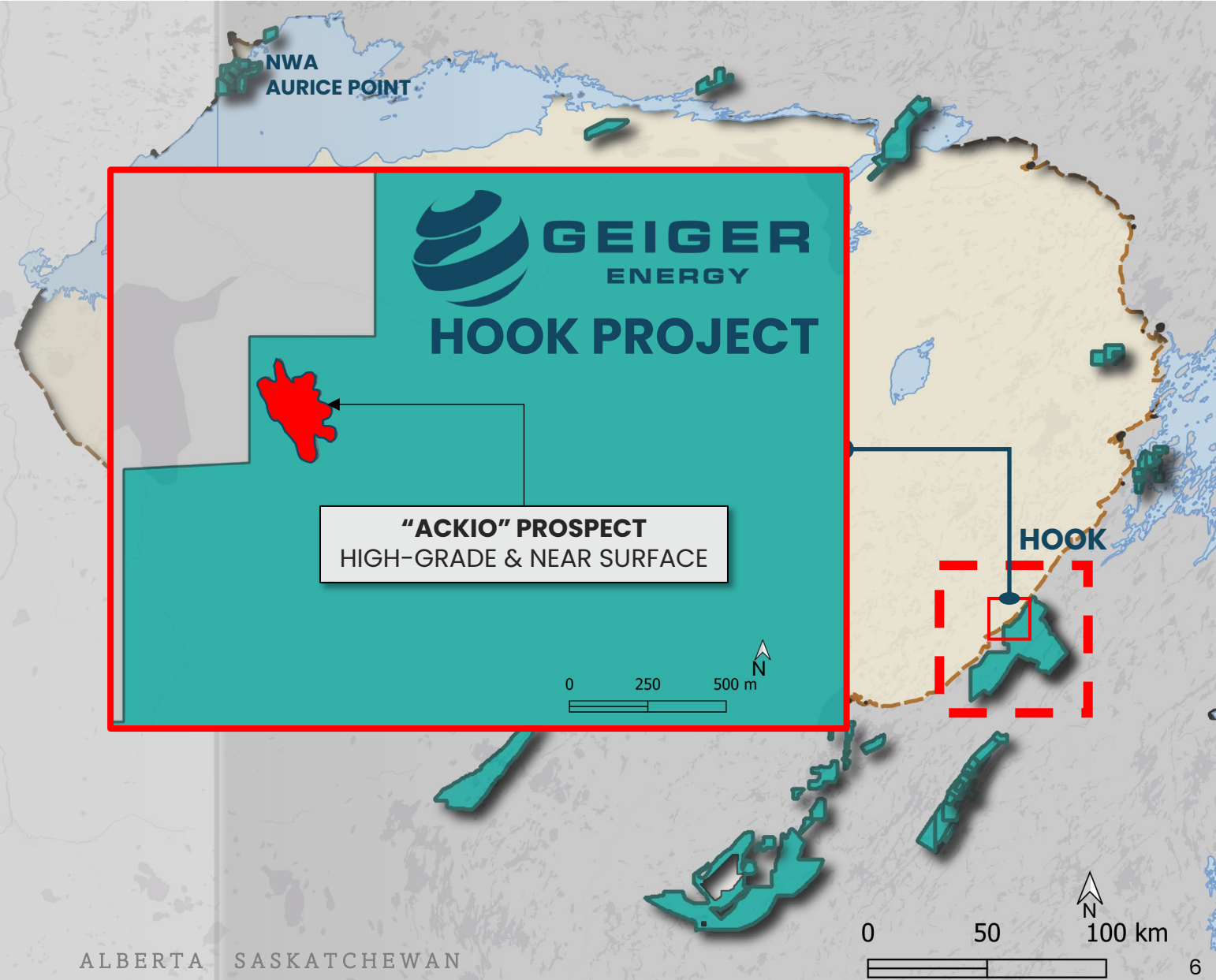
Geiger's ACKIO uranium discovery models repeatable Athabasca mines



Athabasca Basin schematic cross-section  
 Qavvik, Tatiggaq & Loki located in the Thelon Basin

# NEAR TERM OPPORTUNITY – HOOK PROJECT

- ▶ Multiple pods with uranium mineralization starting at 25m below surface
  - Negligible sandstone cover outside of the mineralization
  - No water issues, simple geology
  - Open pit potential = easier mining
- ▶ Mineralized envelope  
175m wide x 375m length x 300m depth.
- ▶ ACKIO has potential to be a high-margin resource that can be mined easily  
Near-surface = high-margin  
Open pit = low CAPEX and OPEX, fast to develop



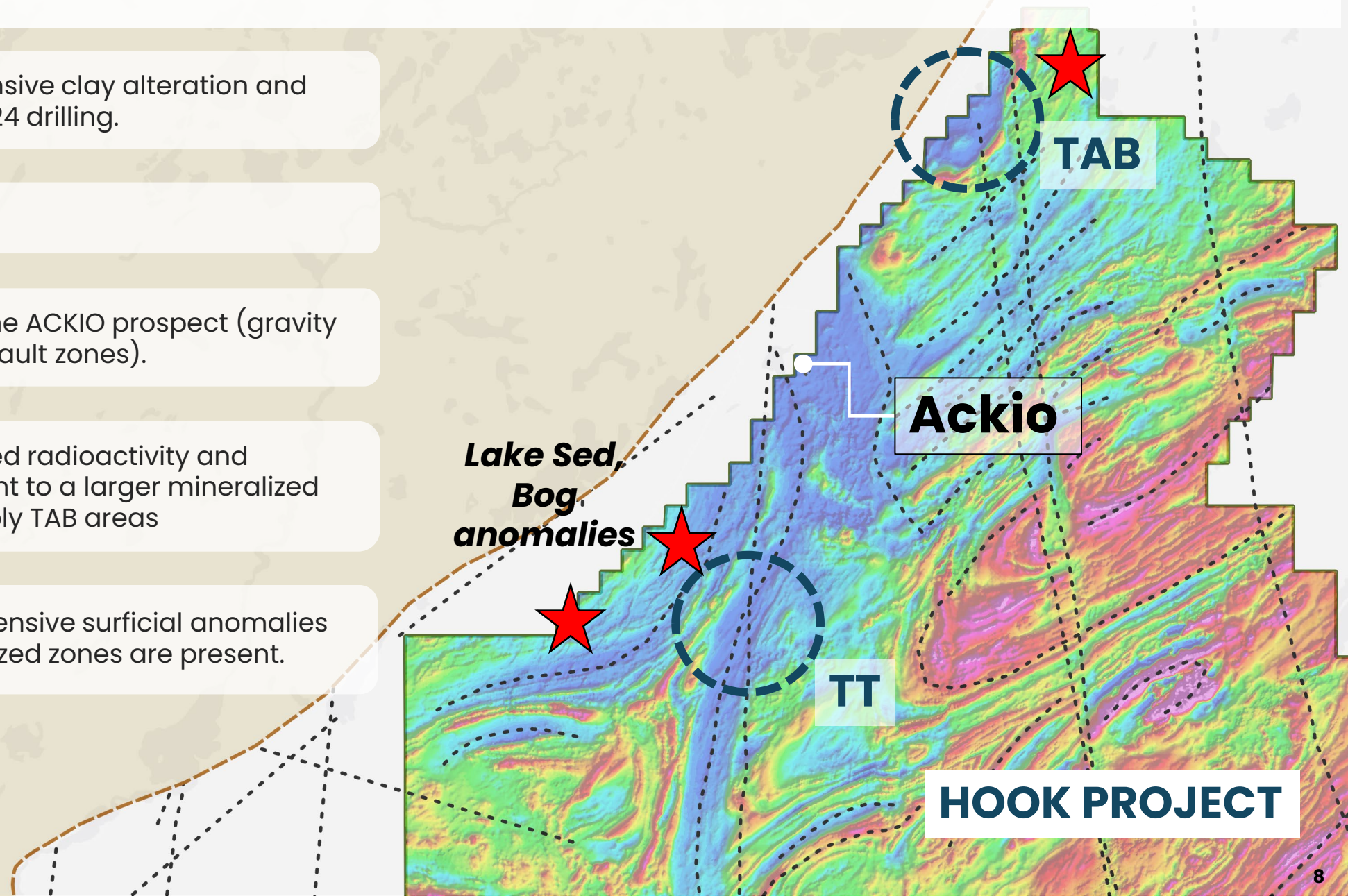
# ACKIO: MULTIPLE SHALLOW & HIGH-GRADE URANIUM INTERSECTIONS

- ▶ 1.86%  $U_3O_8$  over 12.5 metres from 80 metres
- ▶ 2.45%  $U_3O_8$  over 5.0 metres from 100 metres
- ▶ 0.58%  $U_3O_8$  over 27.05 metres from 25 metres
  - One of the shallowest drill intersections drilled in the Athabasca Basin history of exploration.
  - ~6x global average grade of 0.10%  $U_3O_8$
- ▶ 37,500 metres drilled to date on ACKIO.



# HOOK PROJECT: 2026 WINTER DRILL PROGRAM

- ▶ TT and TAB areas with extensive clay alteration and elevated radioactivity – 2024 drilling.
- ▶ Drill 2,000 to 3,000 m
- ▶ Area is proven fertile with the ACKIO prospect (gravity and magnetic lows, major fault zones).
- ▶ Extensive alteration, elevated radioactivity and geochemical signature point to a larger mineralized system in the TT and possibly TAB areas
- ▶ Additional targets have extensive surficial anomalies that suggest more mineralized zones are present.

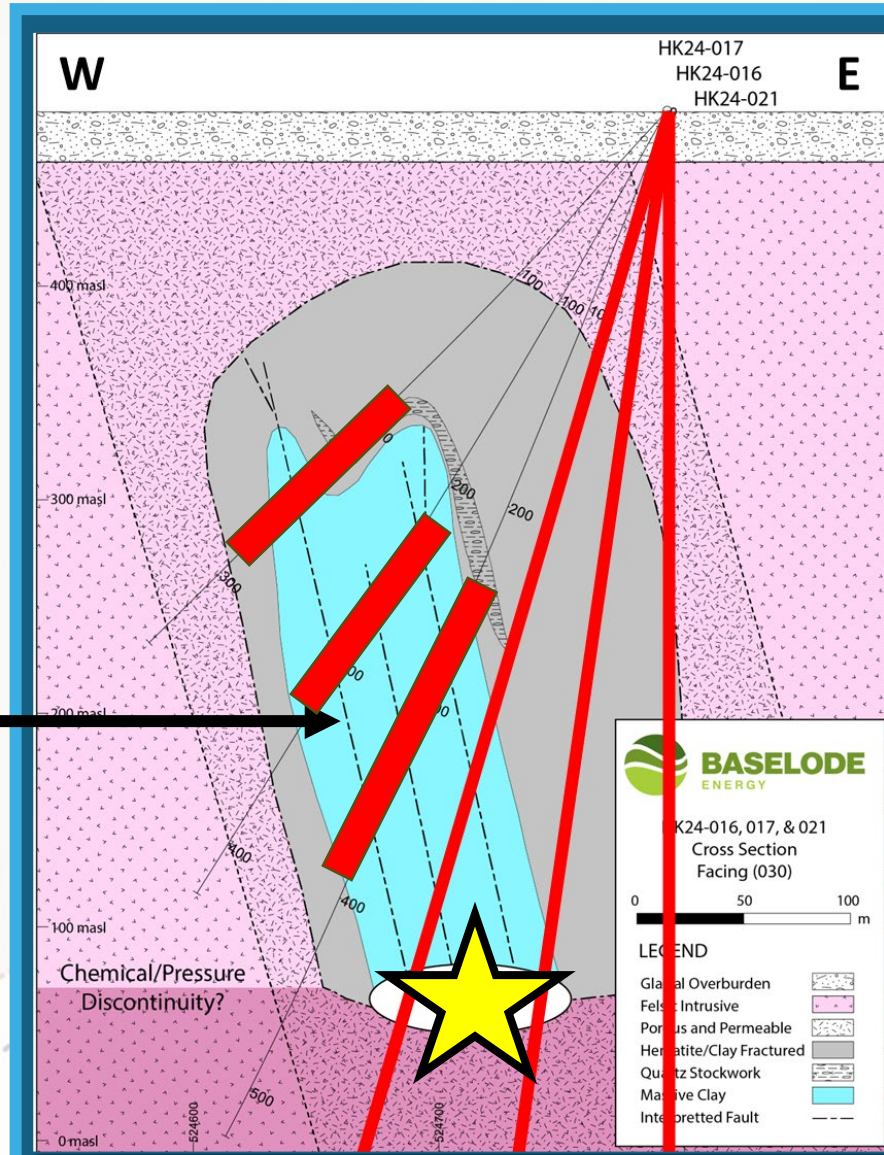


# HOOK PROJECT: TARGETING OBJECTIVE – TT

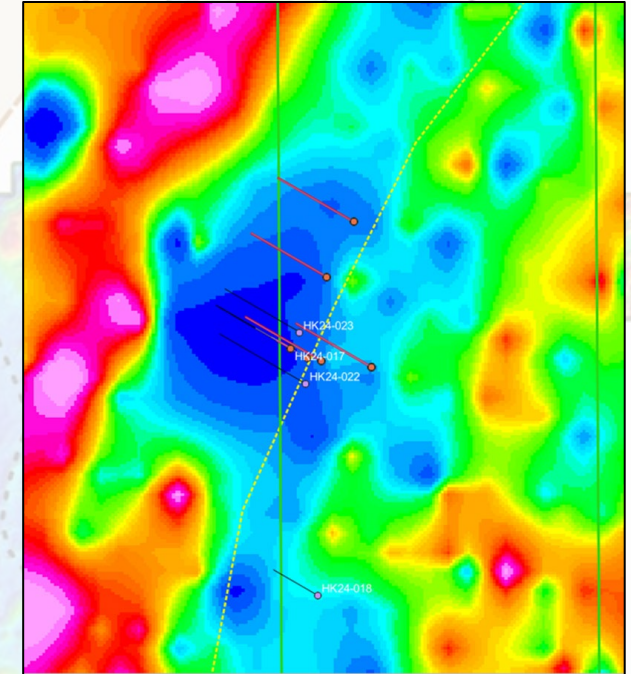
- ▶ Follow-up alteration systems.
- ▶ Drill below altered corridors to potential redox fronts (Traps)
- ▶ Synthesize key structures to determine highest priority targets

Intense Pb Isotopes ratios, anomalous U and some Boron at TT in this section

## TT Target: Cross Section



## TT Target: Gravity Low



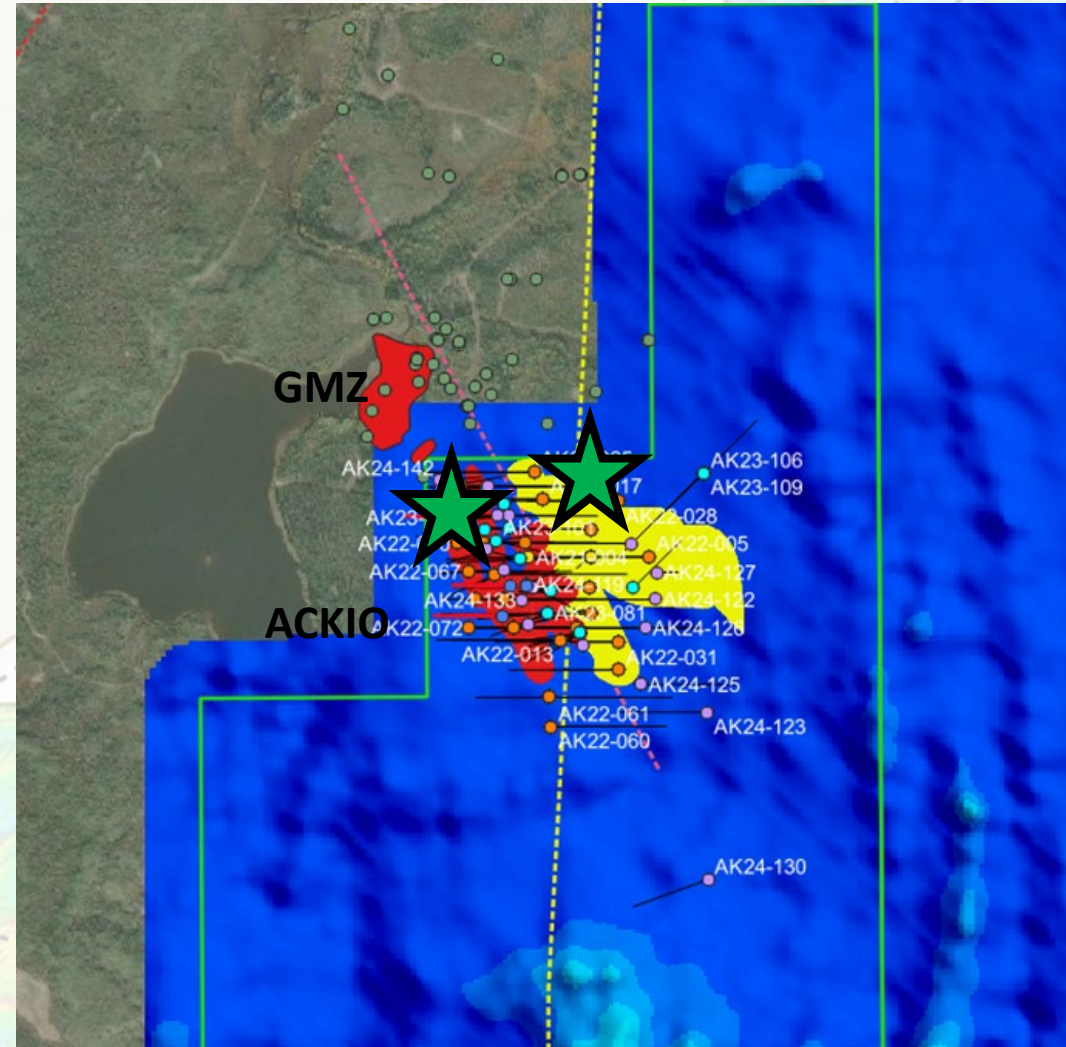
# HOOK PROJECT: TARGETING OBJECTIVE – ACKIO

- ▶ Follow-up and extend known lenses
- ▶ High-grade lenses possibly not cut off
- ▶ Eastern limb of synform – possible extension

## ACKIO Target Area

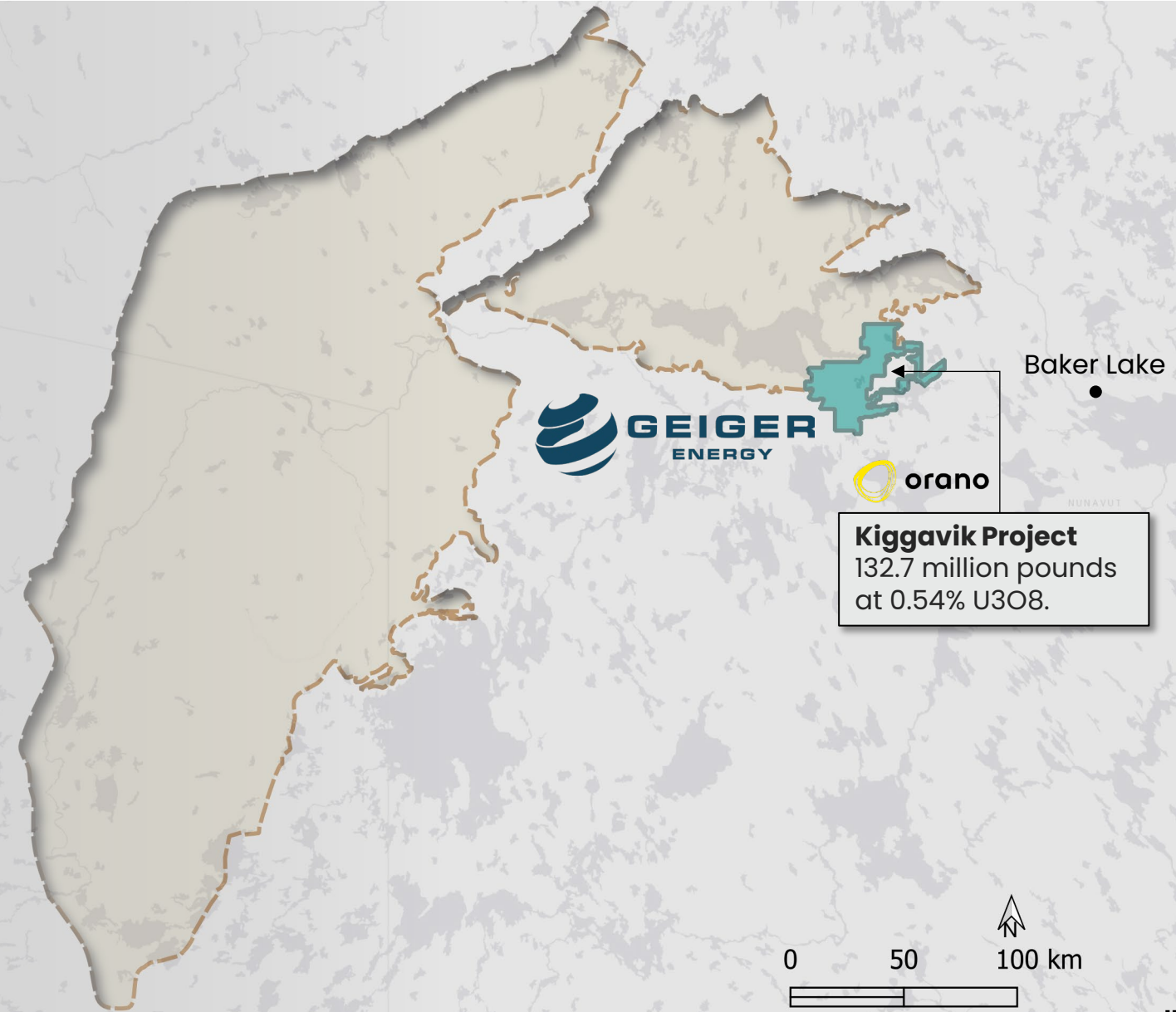
GMZ and ACKIO mineralization - **RED**

ACKIO Sandstone - **YELLOW**



# THELON BASIN – FIRST INSTANCE OF UNCONFORMITY URANIUM AT ABERDEEN

- ▶ Aberdeen is Untapped Country:  
District-scale beside one of the largest, undeveloped uranium deposits in Canada.
- ▶ 1<sup>st</sup> unconformity hit at Loki → game changer.
- ▶ Existing high-grade zones + 50 targets within 95,000-hectare property.
- ▶ High Reward:  
Discovery would drive a step-change valuation and re-rating across basin



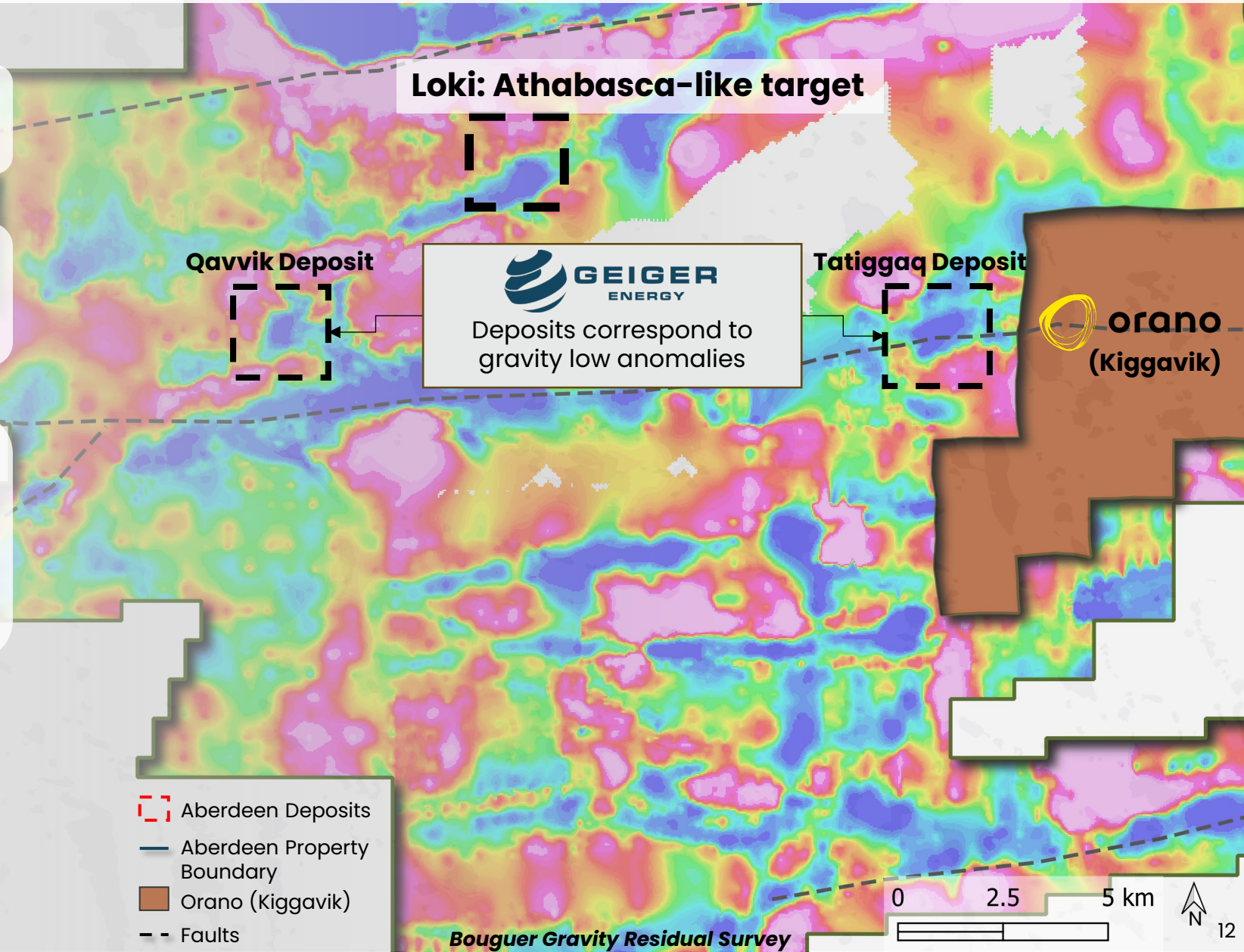
# DISCOVERY SUCCESS: ABERDEEN'S THREE MAJOR DISCOVERIES

► First instance of basement - sedimentary unconformity contact at Loki.

► Optionality: High-grade, near-surface basement hosted deposits like Orano's Kiggavik.

► Drilling confirmed Tier 1 potential:

- 2.25%  $U_3O_8$  over 11.1 metres
- 1.01%  $U_3O_8$  over 6.2 metres
- 1.49%  $U_3O_8$  over 3.30 metres, including 8.17%  $U_3O_8$  over 0.5 metres.



- ▭ Aberdeen Deposits
- Aberdeen Property Boundary
- Orano (Kiggavik)
- - Faults

Bouguer Gravity Residual Survey

0 2.5 5 km

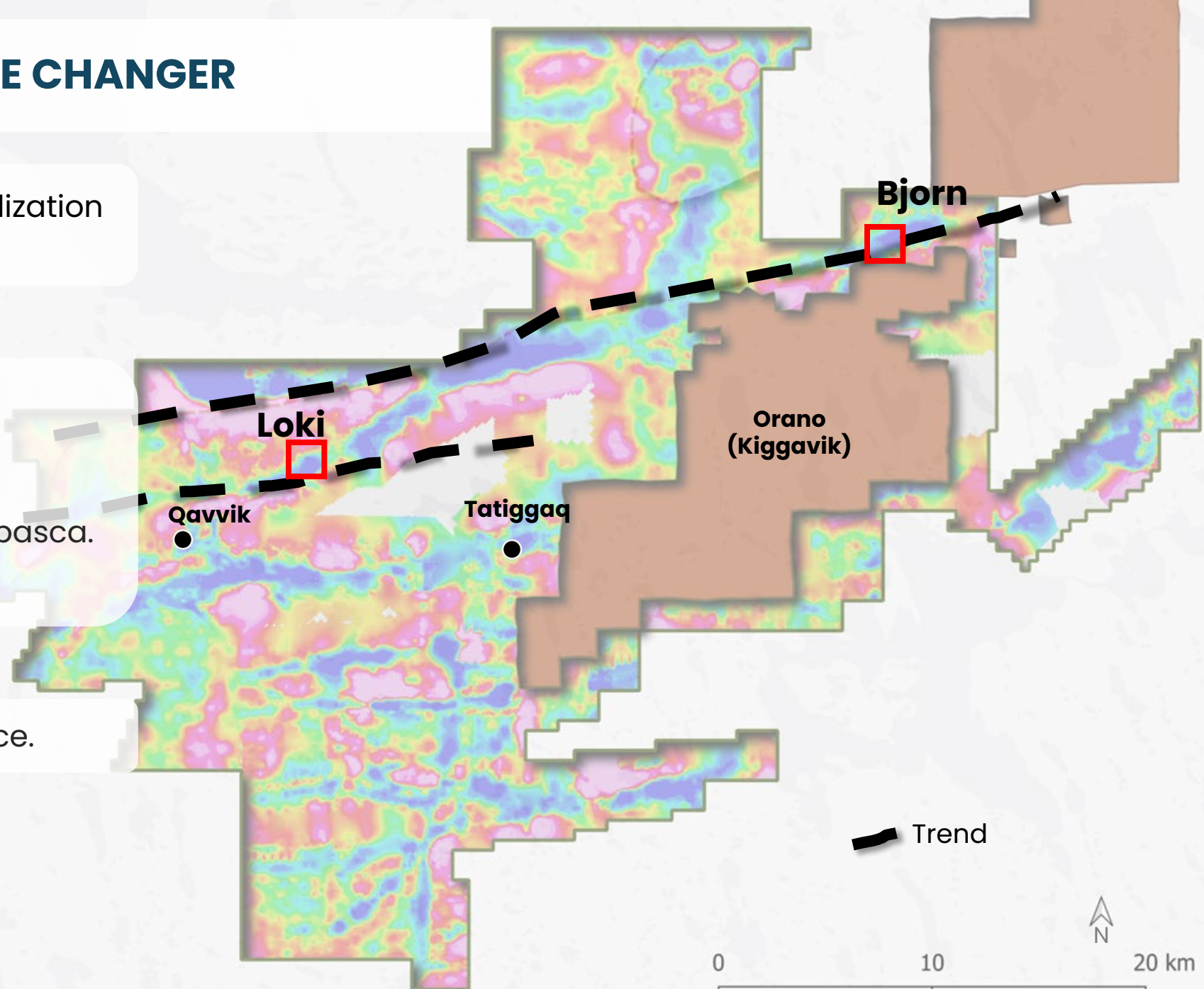
## 2025 EXPLORATION – GAME CHANGER

▶ 1<sup>st</sup> intersection of uranium mineralization at the unconformity at Loki

▶ Why game changer?

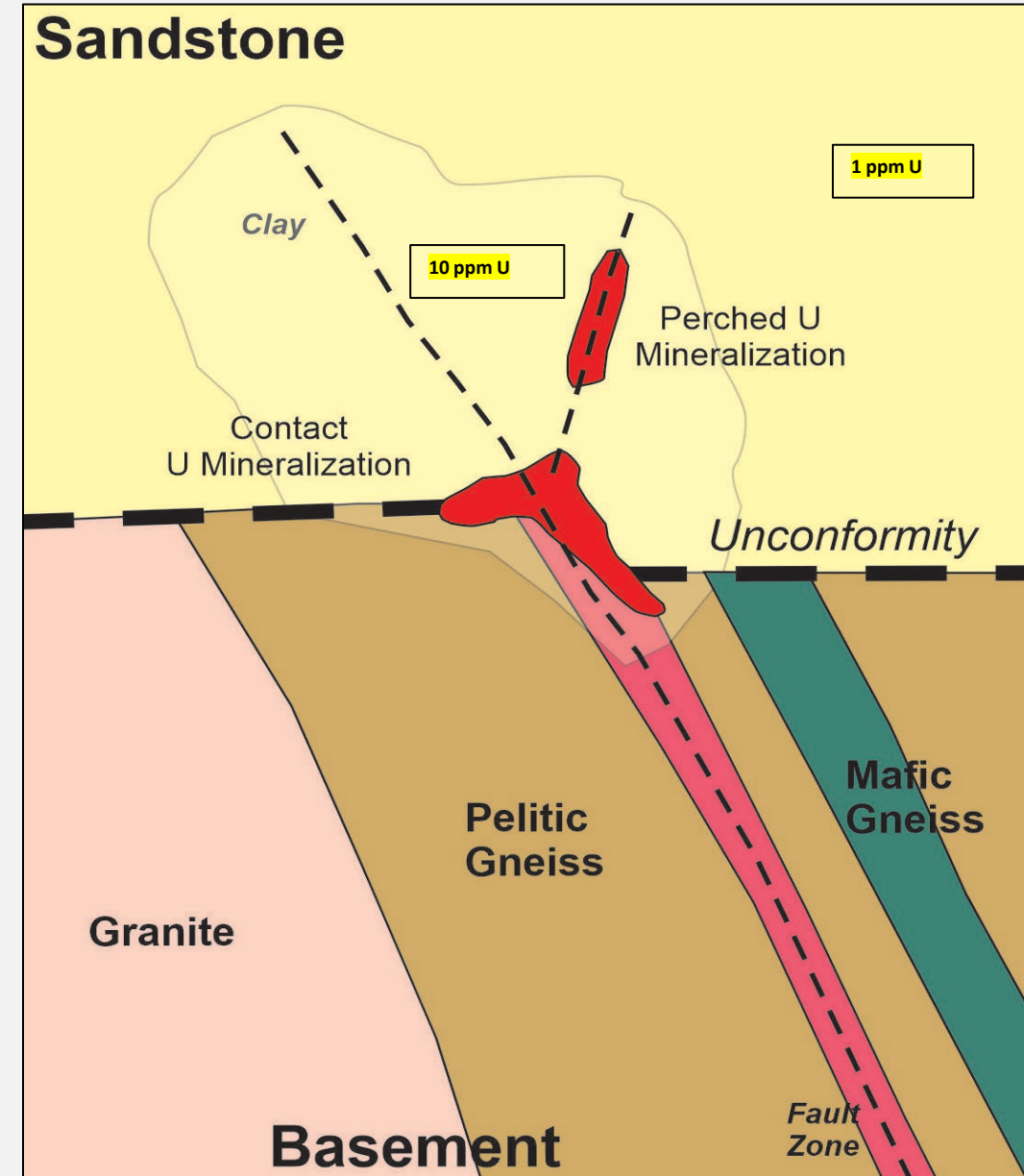
- Shows that Thelon is not just a basement story.
- High-grade potential like Athabasca.
- Potential large-scale deposits.

▶ We have just scratched the surface.



# MODEL WE ARE LOOKING FOR

- ▶ Sandstone
- ▶ Right basement rocks (traps)
- ▶ Faults – fluid channels
- ▶ Clay and bleaching (alteration)
- ▶ Radioactivity at Unconformity



# ALTERATION & FAULTS

## ▶ Background Sandstone

- Pink and red
- No clay
- Competent

**VS.**

## ▶ Exciting Sandstone

- White and orange
- Rubbly and broken (faults)
- Clay

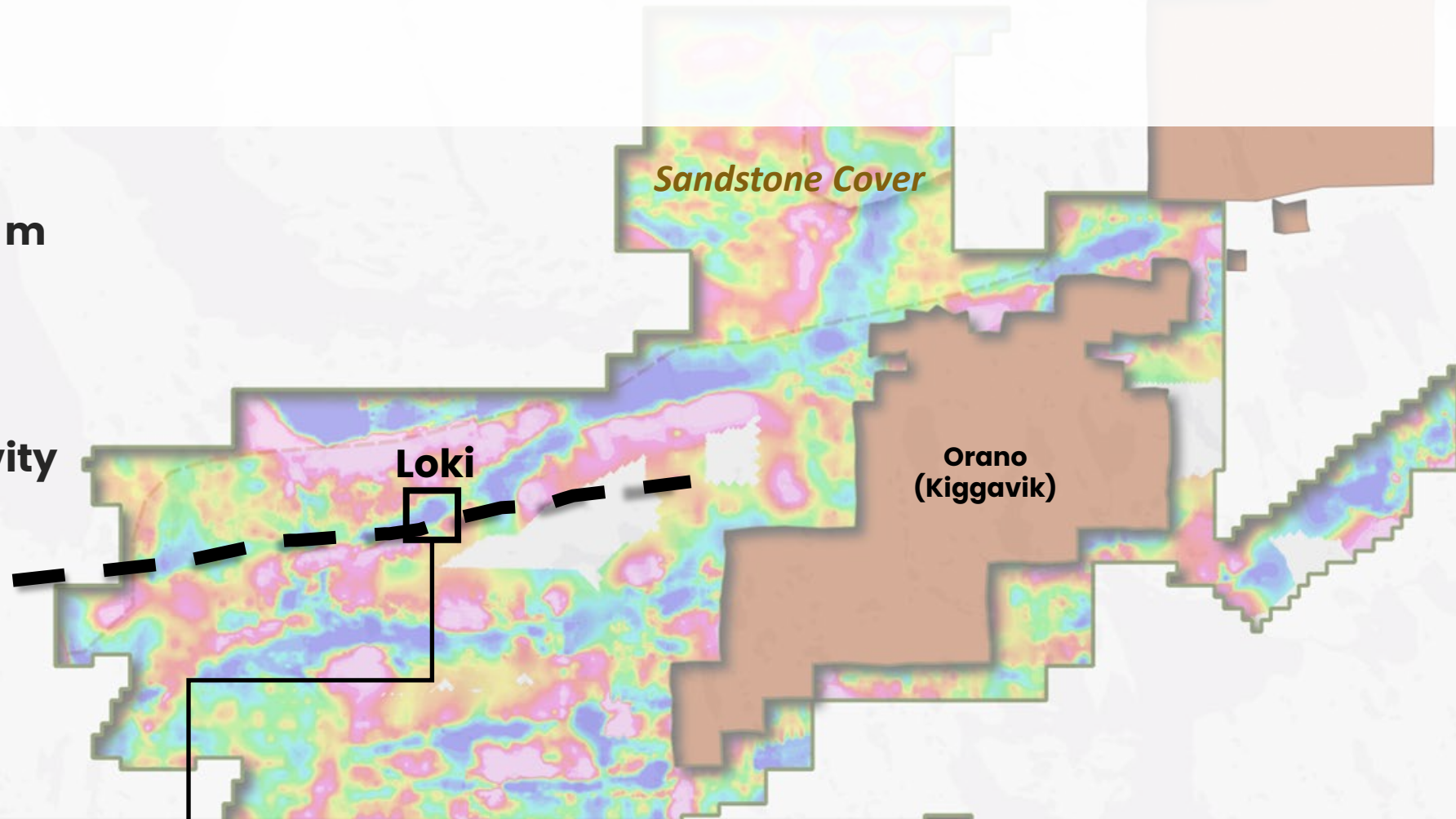
**(LOKI)**



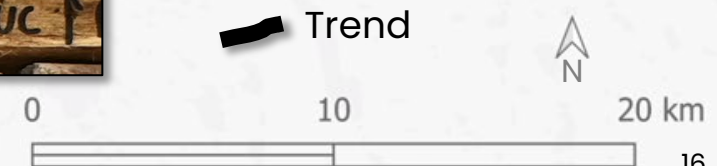
# LOKI TARGET

## ► Loki:

- Shallow sandstone – **160 m** thick
- Alteration
- Faults
- **1<sup>st</sup> instance of radioactivity at unconformity in NE Thelon Basin**



**(119 ppm over 0.6 m)**



# LOKI TARGET

## ► Loki:

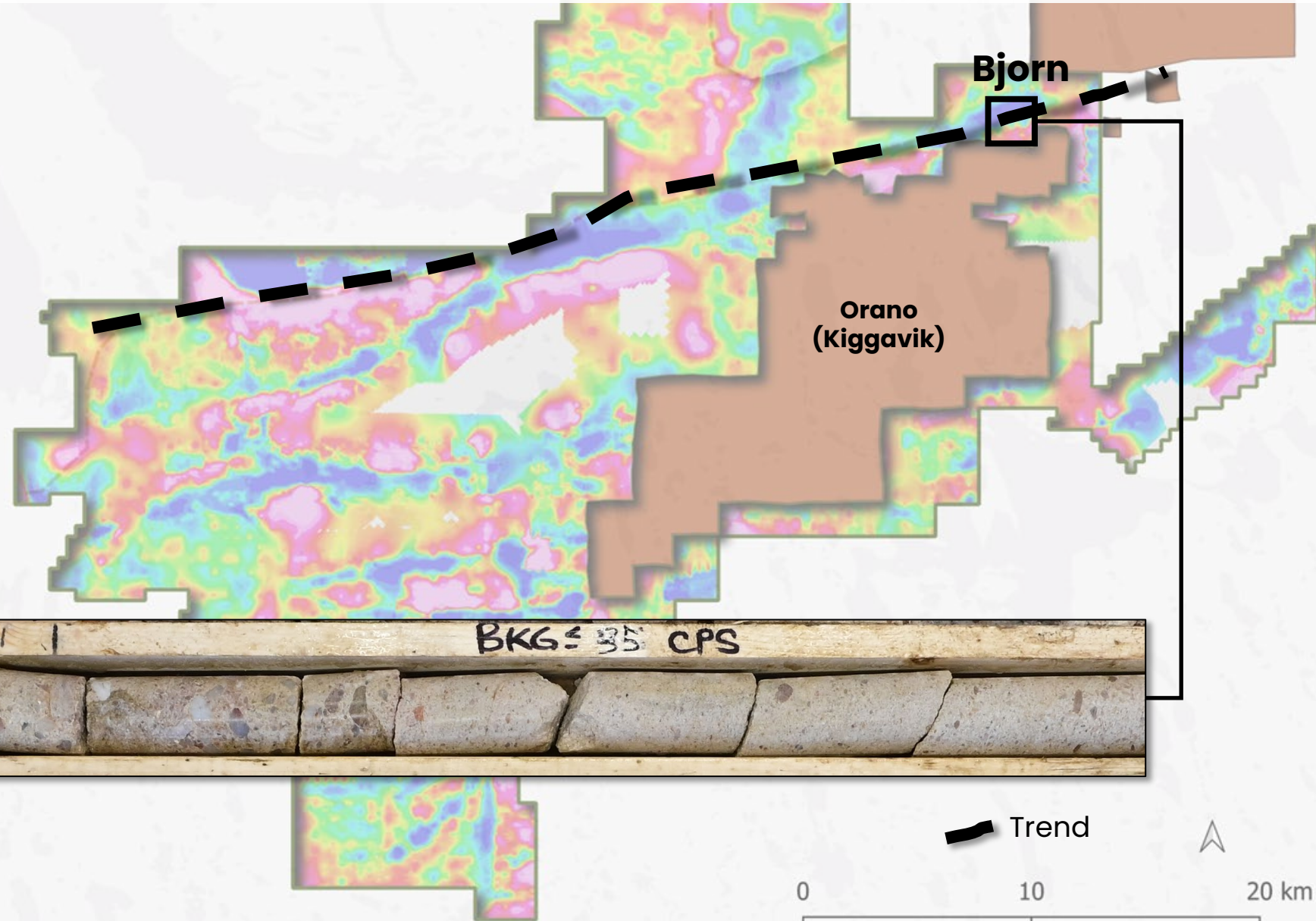
- 3.45 ppm over 20 m (84 to 104 m)
- >300 ppm B
- 1.46 ppm Co
- $Pb^{207}/Pb^{206}$  0.5



# BJORN TARGET

## Bjorn:

- Strong clay and bleaching – similar to Loki and major Athabasca systems
- 120 m of bleaching and alteration
- Several >1 ppm U – up to 19.9 ppm
- Elevated Mo, Ni, Co, B



# DISCOVERY CHECKLIST



**Geology: Age, size of basin, reducing rock units**



**Alteration: Clay, bleaching, graphite or sulphide**



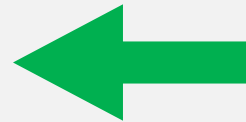
**Structure: Long-lived fault zones**



**Uranium: Deposits, showings, geochemistry anomalies**



**'At the unconformity' mineralization**



**Discovered at Loki in 2025**



**Evidence of a system with scale**



**Major discovery**

# 2026 OUTLOOK & UPCOMING CATALYSTS

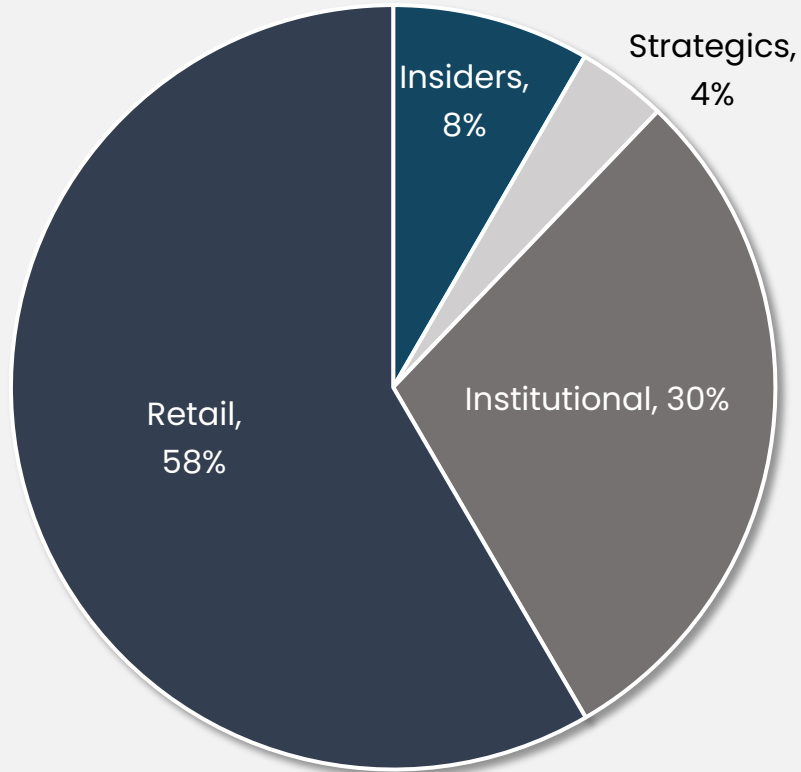
## ▶ **Winter 2026: Hook Drill Program**

- 2,000 – 3,000 metres.
- Focus on TT, ACKIO, NES and other grids.
- Follow up drilling on strong results in 2024 + other identified anomalies.
- Budget: \$2.5 million (fully funded)

## ▶ **Summer 2026: Aberdeen Drill Program**

- 5,000 to 12,000 metres.
- Test for high-impact unconformity systems at Loki.
- Follow up fertile high-priority corridors (Bjorn, Mammoth, Nymeria).
- Budget: \$5-10 million

# CORPORATE OVERVIEW: CREATING VALUE THROUGH DISCOVERY



Corporate Structure	
TSX Venture Exchange	TSXV
Share Price (C\$)	0.255
Shares Outstanding (M)	58.3
Warrants & Options (M)	~8.5
Basic Market Capitalization (CAD)	14.8 M
<b>Cash (CAD)</b>	<b>~7.0 M</b>

## DR. REBECCA HUNTER, CEO: A FIELD GEOLOGIST TO CEO

- 20 years field experience as a U exploration geologist in Arctic Canada
- Project Geologist Cameco for 11 years; VP Exploration, CEO Forum Energy Metals
- Credited with Tatiggaq and Qavvik discoveries in Thelon – First uranium discoveries in the area since 1980s – 2<sup>nd</sup> year of drilling
- Created and completed a PHD, structural geology and ore deposits – focus Thelon Basin
- A vision to make the Thelon Basin the next major U District



# MANAGEMENT & BOARD



**REBECCA HUNTER**  
CEO, DIRECTOR

- 15 years of experience in uranium exploration
- ex-Cameco, led the team responsible for discovering Tatiggaq and Qavvik deposits
- PhD in Geology, focused on the Thelon Basin; economic geology



**STEPHEN STEWART**  
CHAIRMAN OF THE BOARD

- 15 years of experience in the resource and finance industries
- Focused on the M&A, exploration and development of resource assets
- Held senior offices with numerous TSX Venture companies



**JOEL FRIEDMAN**  
CFO

- 13 years of experience in Mining and Cannabis industries
- Most recently as CFO of Khiron Life Sciences
- CPA, CA, Bachelor of Business Administration (Hons)



**CHARLES BEAUDRY**  
ADVISOR

- Geologist with more than 35 years of experience across the globe
- 17 years with Noranda-Falconbridge-Xstrata as well as a tenure with IAMGOLD as General Manager of New Business Opportunities



**MICHAEL MANSFIELD**  
DIRECTOR

- Over 20 years experience as an investment advisor.
- Currently Vice-President, investment professional with Industrial Alliance Securities
- Successfully listing over 100 companies via qualifying transaction by Capital Pool Corporations and secondary financings



**JANET MEIKLEJOHN**  
DIRECTOR

- 30 years experience in corporate governance, finance and marketing focused in the mining sector.
- Managing Principal of Emerald Capital.
- Recently CFO of Empress Royalty Corp.



**JAMES SYKES**  
DIRECTOR

- 15 years of experience in uranium exploration and discovery
- Involved with the discovery of over 550M lbs of U<sub>3</sub>O<sub>8</sub> in the Athabasca Basin
- Discovered NexGen's Arrow Deposit and integral in the discovery of Hathor's Roughrider deposits

# GEIGER ENERGY : PART OF



Ore Group consists of in-house technical and financial expertise & is focused on premier jurisdictions & on metals with strong, long-term fundamentals



## METAL ENERGY MERG: TSXV

British Columbia focused  
Copper & Gold exploration



### GEIGER ENERGY BEEP: TSXV

Discovering Tier 1 Uranium  
Deposits in the Thelon Basin



### STARDUST METALS ZIGY: CSE

Gold in Kirkland Lake.  
Strategic investors incl. Agnico  
Eagle & Eric Sprott



## AMERICAN EAGLE GOLD AE: TSXV

British Columbia focused  
Copper & Gold exploration



### ORECAP OCI: TSXV

Strategic investors incl.  
Agnico Eagle & Eric Sprott

## AWALE ARIC: TSXV

Newmont-backed, Odienne  
IOCG Project in Cote  
d'Ivoire, Africa



### XXIX XXIX: TSXV

Canada's highest grade copper  
open pit deposit & Ontario's largest  
open pit copper resource.

## AURIGINAL MINING AUME: TSXV

Copper & Gold exploration  
consolidating the prolific  
Eastern Chibougamau camp.





# GEIGER ENERGY CORP

**TIER ONE POTENTIAL. PROVEN EXPLORATION. CLEAR PATH FORWARD.**

Building Canada's Next World-Class Uranium District in the Thelon Basin

## Contact

**[rhunter@oregroup.ca](mailto:rhunter@oregroup.ca)**

**[www.geigerenergy.ca](http://www.geigerenergy.ca)**

141 Adelaide Street West, Suite 1102, Toronto, ON M5H 3L5