

FIGURE 1 – Surface projections of modeled ACKIO uranium mineralization

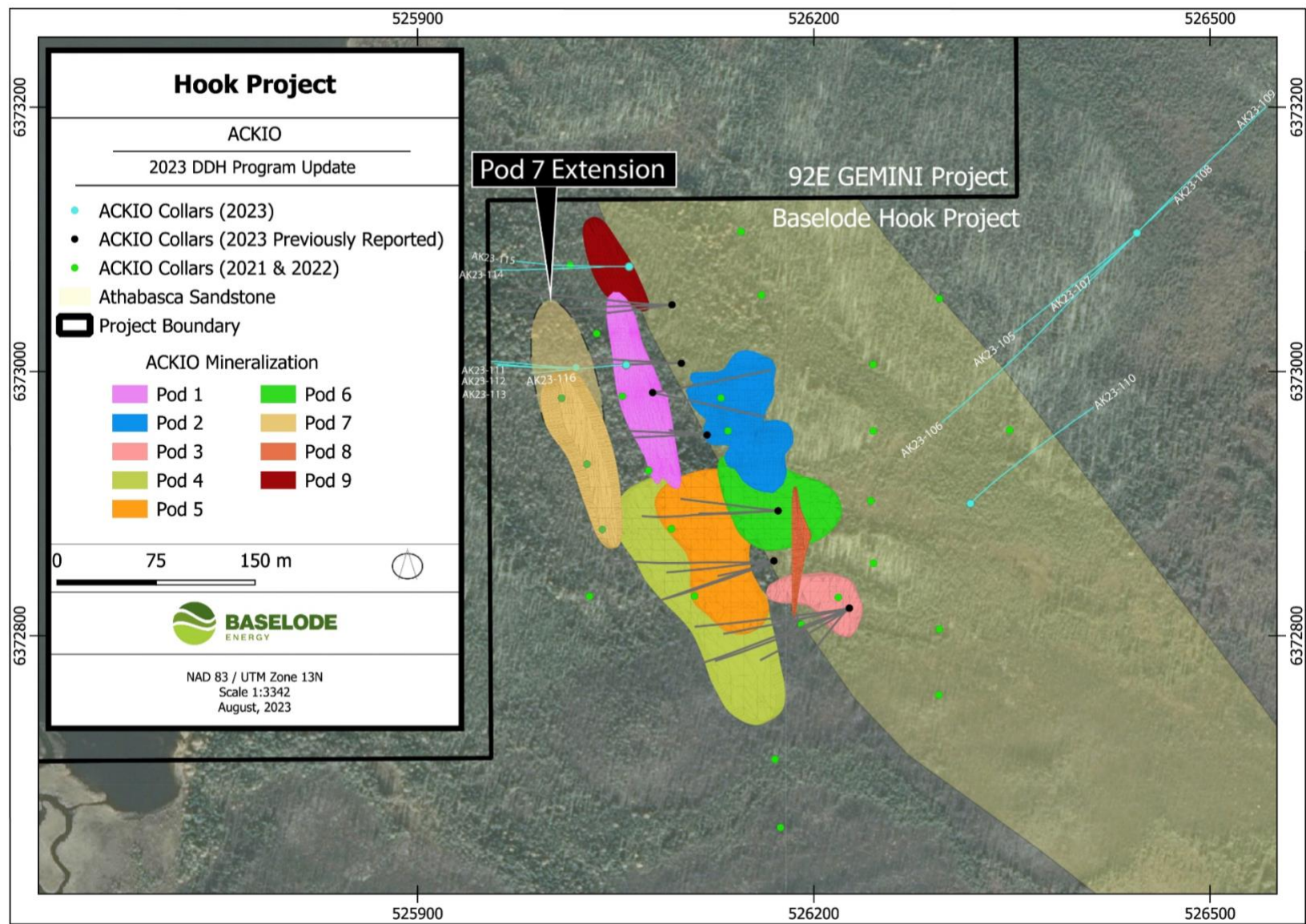


FIGURE 2 – Location of exploration drill hole HK23-008 with respect to ACKIO

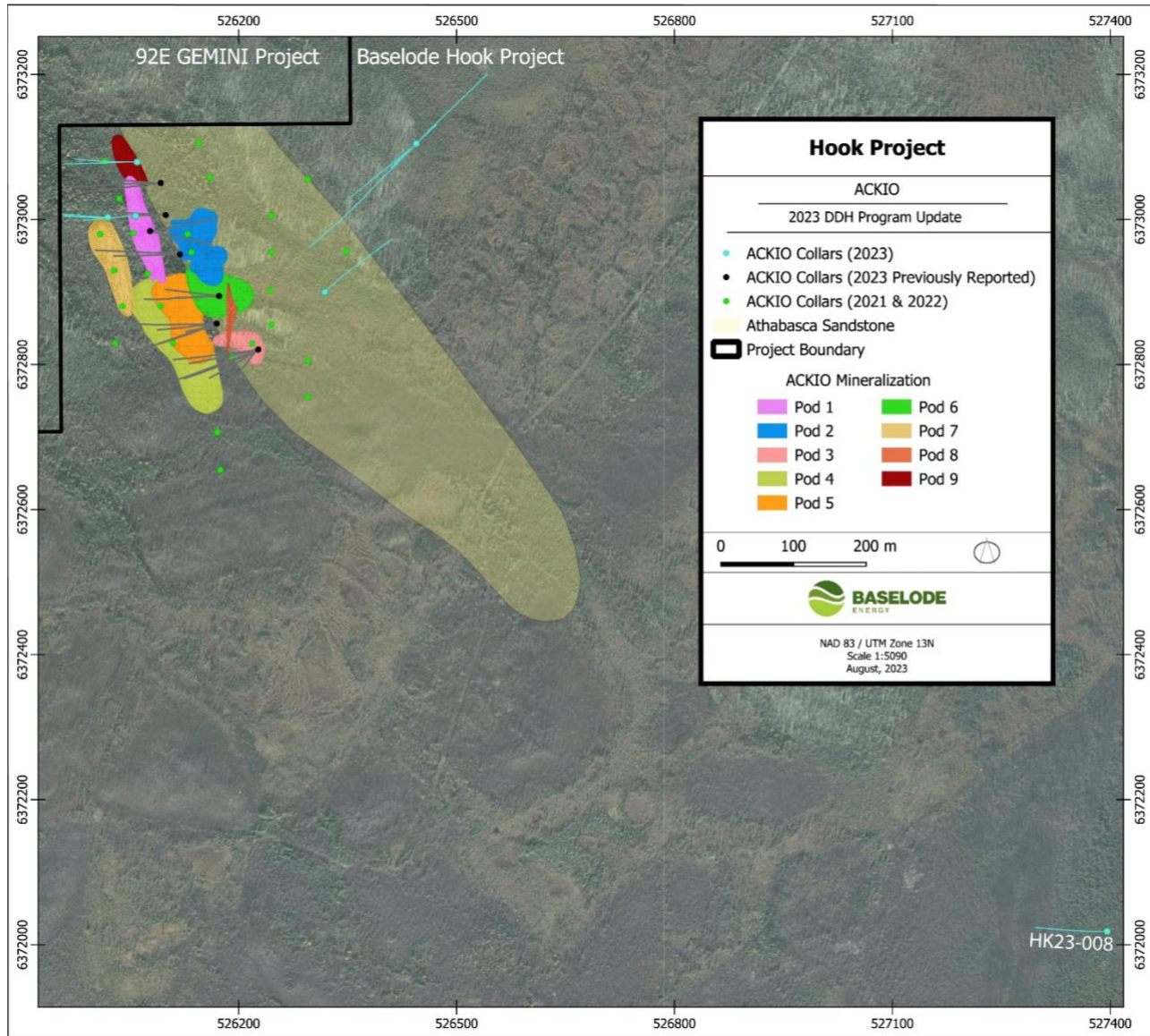


TABLE 1 – Drill collar details and continuous composite elevated radioactivity results from drill holes AK23-105 to AK23-116, HK23-008

DDH	Target Area	Location	East	North	Elevation	Az.	Dip	EOH	Radioactivity (>300 cps)	Assay Results (>0.05 wt% U ₃ O ₈)
AK23-105	Mirror	N/A	526445	6373105	466	225	-60	228	700 cps over 0.25 m at 218.05 m	Assay results pending
AK23-106	Mirror	N/A	526445	6373105	466	225	-45	287.5	No significant results	
AK23-107	Mirror	N/A	526445	6373105	466	225	-80	213	350 cps over 0.1 m at 95.2 m 350 cps over 0.15 m at 96.35 m	Assay results pending Assay results pending
AK23-108	Mirror	N/A	526445	6373105	466	45	-80	210	No significant results	
AK23-109	Mirror	N/A	526445	6373105	466	45	-50	207	No significant results	
AK23-110	Sandstone	N/A	526319	6372900	467	45	-60	237	523 cps over 0.35 m at 127.4 m	Assay results pending
AK23-111	ACKIO	Pod 7 - Overburden contact	525671	6427532	463	270	-75	211.3	590 cps over 5.65 m at 39.8 m ¹ 303 cps over 2.45 m at 58.1 m 302 cps over 2.45 m at 65.05 m 395 cps over 3.1 m at 77.55 m 400 cps over 0.1 m at 93.1 m	Assay results pending Assay results pending Assay results pending Assay results pending Assay results pending
AK23-112	ACKIO	Pod 7 - Overburden contact	525671	6427532	463	270	-60	129	1,235 cps over 2.7 m at 36.9 m 400 cps over 0.05 m at 42.0 m 350 cps over 0.15 m at 45.0 m 1,654 cps over 7.75 m at 49.65 m includes 6,086 cps over 1.2 m at 56.05 m 347 cps over 8.2 m at 59.65 m 319 cps over 1.35 m at 75.75 m	Assay results pending Assay results pending Assay results pending Assay results pending Assay results pending Assay results pending Assay results pending
AK23-113	ACKIO	Pod 7 - Overburden contact	525671	6427532	463	270	-45	90	400 cps over 0.15 m at 52.0 m	Assay results pending
AK23-114	ACKIO	Pod 7 - Extension	526060	6373079	463	270	-65	243	350 cps over 0.3 m at 62.15 m 501 cps over 0.45 m at 69.25 m 350 cps over 0.05 m at 70.7 m 350 cps over 0.1 m at 72.6 m 640 cps over 0.85 m at 74.15 m 530 cps over 0.35 m at 85.6 m	Assay results pending Assay results pending Assay results pending Assay results pending Assay results pending

									500 cps over 0.1 m at 113.35 m	Assay results pending	
									717 cps over 1.7 m at 225.8 m	Assay results pending	
AK23-115	ACKIO	Pod 7 - Extension	526060	6373079	463	270	-70	270	300 cps over 0.05 m at 101.0 m	Assay results pending	
									400 cps over 0.2 m at 251.8 m	Assay results pending	
									330 cps over 0.1 m at 252.15 m	Assay results pending	
									350 cps over 0.15 m at 252.65 m	Assay results pending	
									376 cps over 0.4 m at 253.8 m	Assay results pending	
AK23-116	ACKIO	Between Pods 1 & 7	526058	6373005	463	270	-60	138	852 cps over 1.9 m at 88.25 m	Assay results pending	
								includes	5,500 cps over 0.05 m at 89.25 m	Assay results pending	
									362 cps over 2.2 m at 107.2 m	Assay results pending	
									4,700 cps over 0.15 m at 112.55 m	Assay results pending	
									1,238 cps over 0.5 m at 115.75 m	Assay results pending	
									663 cps over 0.2 m at 122.4 m	Assay results pending	
HK23-008	Regional	N/A	527396	6372018	469	270	-60	174	No significant results		
13 DDH						2,637.8			9 DDH		0 DDH

NOTES: East and North units are metres using NAD83 datum, UTM Zone 13N

Elevation is recorded as "metres above sea level"

Az. = Azimuth, EOH = End of hole (measured in metres)

Composite radioactivity results use 300 cps cut-off and do not contain greater than 2.0 m consecutive dilution

"includes" are composite radioactivity results using 5,000 cps cut-off and do not contain greater than 2.0 m consecutive dilution

1 - includes 1.25 m lost core over interval length